



£240,000

Newton Close, Gateford, Worksop,



Welcome to **BuckleyBrown**, where every home is carefully presented, so you can explore with clarity and confidence.

BuckleyBrown
ESTATE AGENTS

"Finished in neutral tones and ready for immediate occupation, the home provides an excellent blank canvas for purchasers to move straight in while offering scope to add their own personal stamp."

- Jasmine, Valuer



Turn The Key Start The Story

A well-presented three-bedroom link-detached property offering spacious and adaptable accommodation, ideally suited to modern family living.

The property is finished in neutral decor throughout and is offered in move-in ready condition, providing a straightforward opportunity for purchasers to occupy immediately while also allowing scope to personalise and enhance in line with individual requirements. This is a well-proportioned home that will appeal to a range of buyers seeking both comfort and potential.



The Finer Details

This well-presented three-bedroom property offers spacious and versatile accommodation arranged over two floors, complemented by generous outdoor space.

The ground floor offers a spacious and well-proportioned living room featuring a bay window, providing an abundance of natural light. To the rear is an open-plan kitchen/dining room which flows seamlessly into a conservatory overlooking the garden, complete with French doors providing direct access to the outdoor space. A convenient ground floor WC completes the accommodation on this level.

To the first floor, there are three well-proportioned bedrooms presented as a blank canvas, each benefitting from built-in wardrobes. A three-piece family bathroom serves the bedrooms and is accessed from the landing.

Externally, the property is approached via a well-kept lawned frontage with a private driveway leading to an attached garage. To the rear, the property boasts a generous lawn and a large paved patio seating area, providing an excellent space for outdoor dining, relaxation, and entertaining.





BuckleyBrown
ESTATE AGENTS







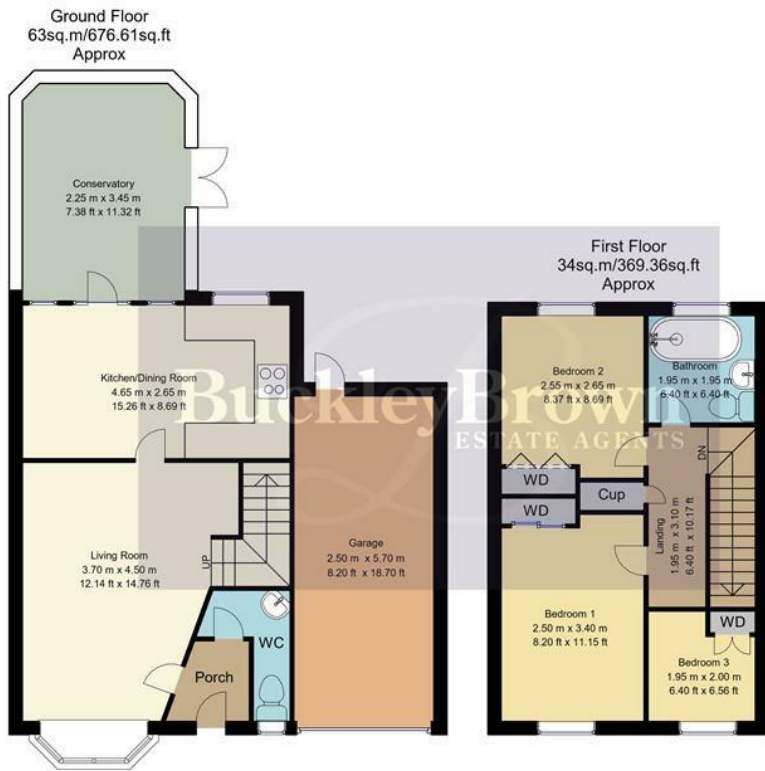
Life in Gateford

Gateford is a popular and well-established residential area on the outskirts of Worksop, offering a peaceful setting with excellent convenience for day-to-day living.

The area is particularly favoured by families and professionals thanks to its range of modern housing, nearby green spaces, and strong community feel. Residents benefit from easy access to local amenities, including supermarkets, schools, healthcare facilities, and leisure opportunities.

The location also provides excellent transport links, with straightforward access to the A57 and A1, making it ideal for commuters travelling to Sheffield, Doncaster, Lincoln, and surrounding areas. Worksop town centre is just a short distance away, offering a wider selection of shops, restaurants, cafés, and rail services, while nearby parks and countryside provide plenty of opportunities for walking, cycling, and outdoor recreation.





Whilst every attempt has been made to ensure the accuracy of the floor plan contained here, no responsibility is taken for incorrect measurements of doors, windows, appliances and room or any error, omission or misstatement. Exterior and interior walls are drawn to scale based on interior measurements. Any figure given is for initial guidance only and should not be relied on as basis of valuation. These plans are for marketing purposes only and should be used as such by any prospective purchase. Specially no guarantee is should not be relied on as a basis of valuation. These plans are for marketing purposes only and should be used as such by any prospective purchase. Specifically no guarantee is given on the total square footage of the property if quoted on this plan.

Key Features

Well presented three bedroom link detached home

Spacious living room with attractive bay window

Three well proportioned bedrooms, all with built in wardrobes

Private driveway and a single garage

South facing rear garden

BuckleyBrown
ESTATE AGENTS



These particulars are intended as a guide only and do not form part of any offer or contract. All descriptions, measurements, images and plans are provided for illustration purposes and should not be relied upon as statements of fact. Prospective purchasers should satisfy themselves as to the accuracy of the information. Buckley Brown Estate Agents accept no liability for any loss arising from reliance on these details.

© Buckley Brown Estate Agents 2026. All rights reserved.

Exceptional homes deserve
exceptional representation.

Let's Chat.

01246 605121

bolsover@buckleybrown.co.uk

[buckleybrown.co.uk](https://www.buckleybrown.co.uk)

BuckleyBrown
ESTATE AGENTS